

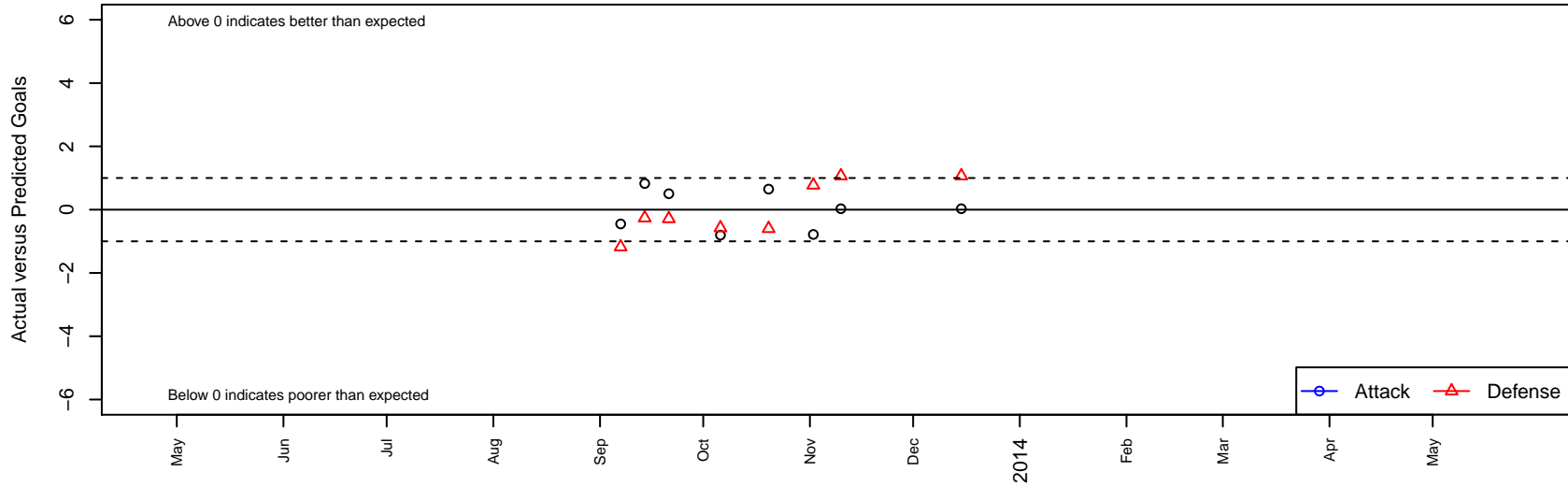
West Valley United Red G01

, CAN
 G01 total strength=888
 attack=1.22 defense=1.51
 alt names used:
 West Valley United Red G01
 West Valley United 01 Red

Venues played:
 NorCal Premier F11 – Region 2 U12



West Valley United Red G01
 Dots are actual minus expected GF (blue circles) and GA (red triangles).
 Blue line is smoothed change in attack strength. Red is smoothed change in defense strength.



	date	home		away		venue	pred.home	pred.away
6849	2013-12-15	West Valley United Red G01	1	Peninsula Odyssey Blue G01	0	NorCal Premier F11 – Region 2 U12	0.97	1.07
6534	2013-11-10	Peninsula Odyssey Blue G01	0	West Valley United Red G01	1	NorCal Premier F11 – Region 2 U12	1.07	0.97
6324	2013-11-02	West Valley United Red G01	0	De Anza Force Red G01	1	NorCal Premier F11 – Region 2 U12	0.78	1.77
6118	2013-10-20	San Bruno Lowen 83 Tornados G01	2	West Valley United Red G01	1	NorCal Premier F11 – Region 2 U12	1.40	0.35
5775	2013-10-06	SF Vikings Ravens Red G01	1	West Valley United Red G01	0	NorCal Premier F11 – Region 2 U12	0.42	0.81
5358	2013-09-21	West Valley United Red G01	1	GSC Gryphons Red G01	3	NorCal Premier F11 – Region 2 U12	0.50	2.71
5193	2013-09-14	West Valley United Red G01	2	Burlingame SC Falcons G01	3	NorCal Premier F11 – Region 2 U12	1.17	2.74
5038	2013-09-07	MVLA Avalanche Black G01	5	West Valley United Red G01	0	NorCal Premier F11 – Region 2 U12	3.82	0.45